

Figure 1: 3D Model of the Property

## Contents

- Property Overview
  - Surfaces
  - Perimeter, Pitch and Surface Area
  - Edge Measurements
  - Edge Type
-



## Property Overview



Figure 2: Overview

## Surfaces

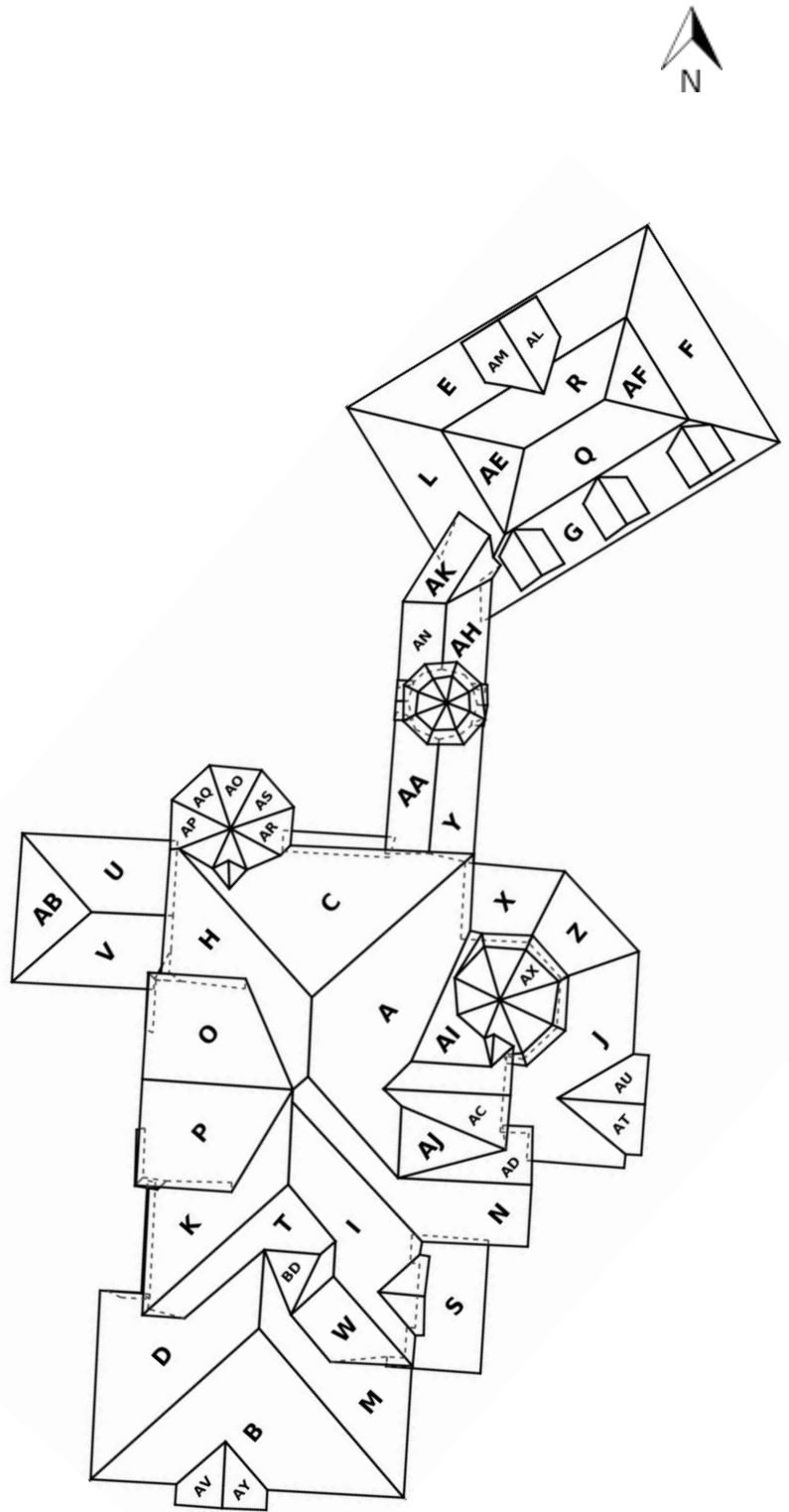


Figure 3: Surfaces

**Perimeter, Pitch and Surface Area**

Label	Perimeter	Slope	Pitch	Surface Area
A	107' 51/8"	44.26	11.7/12	484.94
B	112' 47/32"	43.89	11.5/12	473.1
C	103' 7"	44.29	11.7/12	418.28
D	97' 615/16"	43.82	11.5/12	364.32
E	134' 823/32"	54.52	16.8/12	353.21
F	78' 73/32"	56.75	18.3/12	329.05
G	102' 1015/16"	56.19	17.9/12	298.07
H	90' 711/32"	44.16	11.7/12	287.53
I	93' 513/32"	44.4	11.8/12	273.47
J	89' 715/32"	19.58	4.3/12	260.51
K	87' 1013/32"	43.63	11.4/12	237.86
L	75' 6"	54.65	16.9/12	236.27
M	91' 1017/32"	44.85	11.9/12	236.19
N	92' 215/16"	43.5	11.4/12	232.2
O	61' 1"	28.88	6.6/12	223.03
P	60' 83/16"	28.86	6.6/12	220.14
Q	62' 311/16"	39.18	9.8/12	184.59
R	65' 45/32"	41.19	10.5/12	168.65
S	59' 2 1/4"	20.17	4.4/12	154.38
T	70' 129/32"	43.89	11.5/12	150.88
U	52' 119/32"	24.22	5.4/12	143.82
V	51' 2 5/8"	25.01	5.6/12	138.63
W	45' 1 7/8"	43.27	11.3/12	106.86
X	40' 525/32"	20.59	4.5/12	98.61
Y	44' 67/16"	23.37	5.2/12	92.93
Z	39' 10 5/8"	19.87	4.3/12	92.79
AA	44' 21/16"	25.54	5.7/12	92.6
AB	45' 123/32"	25.35	5.7/12	90.65
AC	42' 8 3/8"	44.46	11.8/12	82.09
AD	48' 6 1/4"	45.69	12.3/12	72.06
AE	39' 21/32"	40.25	10.2/12	71.62
AF	38' 1019/32"	39.71	10.0/12	70.73
<b>Total</b>	-	-	-	<b>6740.06</b>

 Table 1: Perimeter, Pitch and Surface Area (units: ffi / ffi<sup>2</sup>)

**Perimeter, Pitch and Surface Area**

Label	Perimeter	Slope	Pitch	Surface Area
AG	43' 11 11/32"	44.11	11.6/12	69.46
AH	35' 67/32"	24.56	5.5/12	64.15
AI	49' 61/16"	21.45	4.7/12	60.84
AJ	37' 413/16"	18.44	4.0/12	59.86
AK	33' 8 1/2"	29.6	6.8/12	59.24
AL	32' 213/16"	41.75	10.7/12	58.31
AM	32' 23/32"	42.05	10.8/12	57.45
AN	30' 11 13/32"	26.47	6.0/12	53.66
AO	37' 6 3/8"	60.87	21.5/12	48.25
AP	37' 17/32"	61.64	22.2/12	47.5
AQ	37' 23/32"	60.69	21.4/12	47.2
AR	36' 27/32"	61.27	21.9/12	46.75
AS	37' 2"	60.72	21.4/12	45.4
AT	30' 619/32"	26.04	5.9/12	43.29
AU	30' 43/16"	26.85	6.1/12	42.1
AV	28' 01/16"	43.88	11.5/12	41.54
AW	32' 10"	34.55	8.3/12	40.91
AX	35' 013/16"	62.82	23.4/12	40.41
AY	27' 815/16"	45.81	12.3/12	40.4
AZ	34' 111/16"	62.12	22.7/12	38.71
BA	34' 521/32"	62.82	23.4/12	36.36
BB	34' 015/16"	63.69	24.3/12	36.16
BC	33' 321/32"	64.86	25.6/12	35.62
BD	24' 9"	23.73	5.3/12	28.23
BE	30' 319/32"	65.05	25.8/12	28.23
BF	29' 109/16"	62.94	23.5/12	26.97
BG	35' 7 5/8"	63.68	24.3/12	25.89
BH	29' 9 5/8"	62.37	22.9/12	25.4
BI	20' 719/32"	40.67	10.3/12	25.0
BJ	20' 613/16"	41.35	10.6/12	24.88
BK	20' 711/32"	43.28	11.3/12	24.8
BL	20' 7 1/4"	41.24	10.5/12	24.73
<b>Total</b>	-	-	-	<b>1347.7</b>

 Table 1: Perimeter, Pitch and Surface Area (units: ffi / ffi<sup>2</sup>)

**Perimeter, Pitch and Surface Area**

Label	Perimeter	Slope	Pitch	Surface Area
BM	20' 33/32"	41.14	10.5/12	24.15
BN	31' 521/32"	56.42	18.1/12	24.08
BO	20' 33/16"	43.72	11.5/12	24.07
BP	21' 1121/32"	44.61	11.8/12	23.86
BQ	27' 021/32"	64.35	25.0/12	23.75
BR	22' 0 1/8"	46.77	12.8/12	23.26
BS	23' 37/32"	38.02	9.4/12	22.19
BT	24' 29/16"	38.48	9.5/12	18.3
BU	28' 35/32"	63.42	24.0/12	17.71
BV	16' 715/32"	51.02	14.8/12	14.76
BW	16' 11 3/4"	50.55	14.6/12	14.36
BX	16' 67/16"	53.5	16.2/12	13.2
BY	16' 229/32"	50.48	14.5/12	13.17
BZ	20' 315/16"	65.1	25.9/12	12.24
CA	20' 323/32"	65.32	26.1/12	12.06
CB	19' 1121/32"	67.05	28.3/12	11.95
CC	19' 10 3/8"	70.37	33.6/12	11.89
CD	19' 63/16"	69.72	32.5/12	11.25
CE	19' 829/32"	67.47	28.9/12	10.42
CF	19' 21/16"	70.72	34.3/12	9.97
CG	19' 63/32"	68.35	30.2/12	9.87
CH	16' 4 1/8"	46.22	12.5/12	9.15
CI	11' 11 5/8"	38.75	9.6/12	8.56
CJ	12' 213/32"	42.6	11.0/12	8.51
CK	15' 10 3/4"	42.31	10.9/12	8.41
CL	11' 89/32"	42.21	10.9/12	7.57
CM	11' 719/32"	38.16	9.4/12	7.43
CN	11' 417/32"	40.67	10.3/12	7.41
CO	11' 213/16"	39.9	10.0/12	7.26
CP	12' 4 5/8"	47.17	12.9/12	7.2
CQ	10' 85/16"	34.38	8.2/12	6.8
CR	10' 825/32"	37.11	9.1/12	6.63
<b>Total</b>	-	-	-	<b>431.44</b>

 Table 1: Perimeter, Pitch and Surface Area (units: ffi / ffi<sup>2</sup>)

### Perimeter, Pitch and Surface Area

Label	Perimeter	Slope	Pitch	Surface Area
CS	11' 10"	65.89	26.8/12	6.51
CT	14' 9 17/32"	58.64	19.7/12	6.18
CU	10' 5 3/4"	43.77	11.5/12	6.1
CV	10' 39/16"	44.97	12.0/12	6.05
CW	10' 331/32"	44.83	11.9/12	5.56
CX	10' 623/32"	43.97	11.6/12	5.3
CY	10' 39/16"	45.95	12.4/12	4.92
CZ	9' 927/32"	43.94	11.6/12	4.87
DA	8' 6 7/16"	46.98	12.9/12	4.36
DB	10' 4 7/8"	43.33	11.3/12	4.27
DC	9' 027/32"	36.75	9.0/12	4.22
DD	9' 431/32"	48.29	13.5/12	3.94
DE	8' 11 9/16"	29.51	6.8/12	2.51
<b>Total</b>	-	-	-	<b>64.79</b>

Table 1: Perimeter, Pitch and Surface Area (units: ffi / ffi<sup>2</sup>)







### Edge Measurements.

Surface(s): F, I, K, L, U, V, X, AC, AE, AF, AG, AL, AM, AR, AT, AU, BD, BG, BX, BZ, CI, CP, CQ, DE

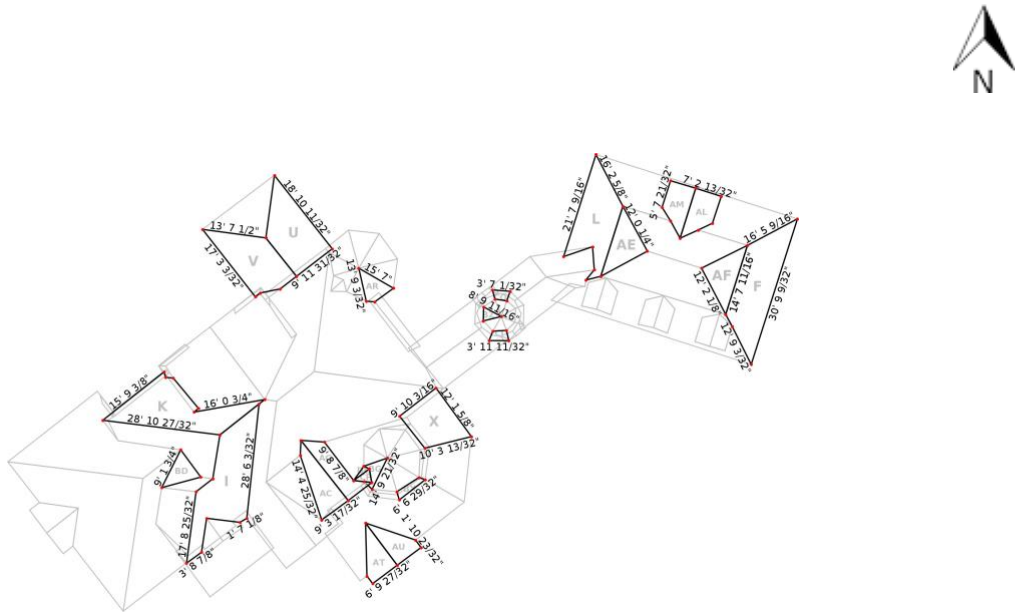


Figure 5: Edge Measurements

### Edge Measurements.

Surface(s): G, N, O, P, Q, W, Y, Z, AA, AD, AP, BA, CE, CF, CL, CS

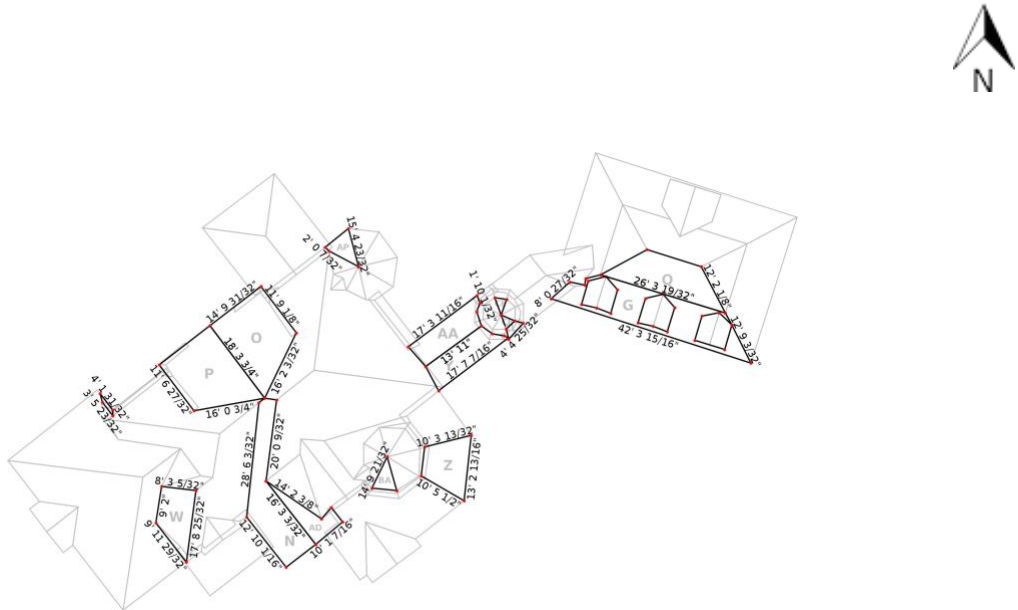


Figure 6: Edge Measurements



### Edge Measurements.

Surface(s): S, T, AI, AJ, AK, AQ, AW, AX, BS, BY, CA, CH, CO, DC

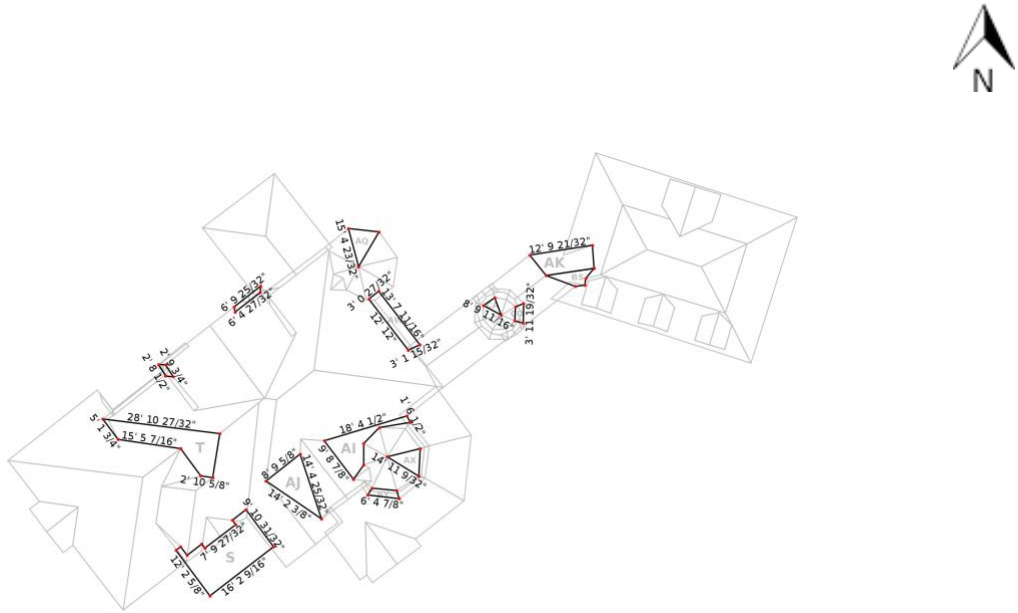


Figure 7: Edge Measurements

### Edge Measurements.

Surface(s): AS, AZ, BM, BN, BO, BT, BV, CB, CM, DA, DB

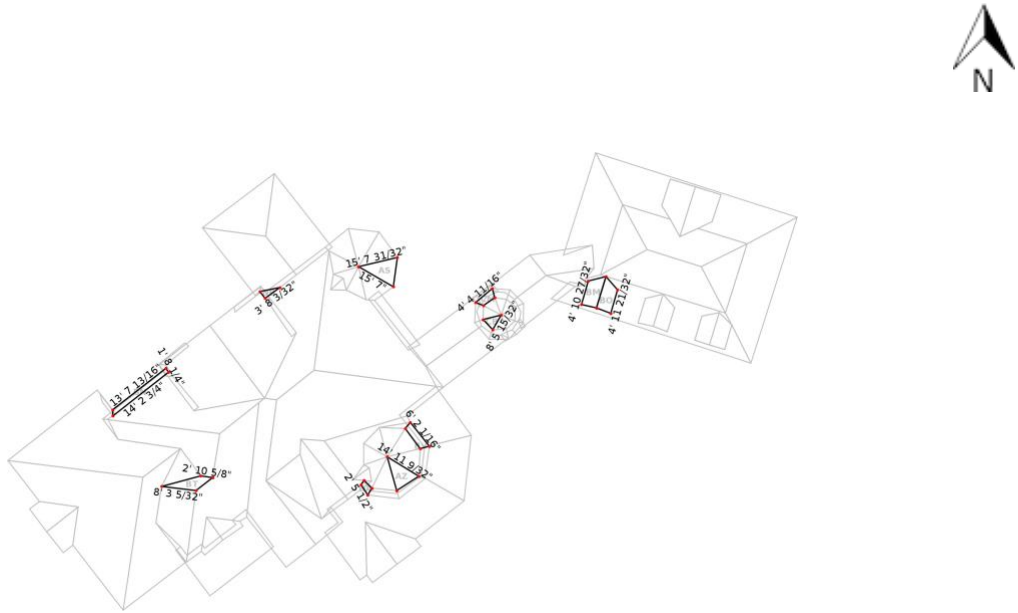


Figure 8: Edge Measurements



### Edge Measurements.

Surface(s): BB, BF, BW, CC, CU, CV, CW, CZ, DD

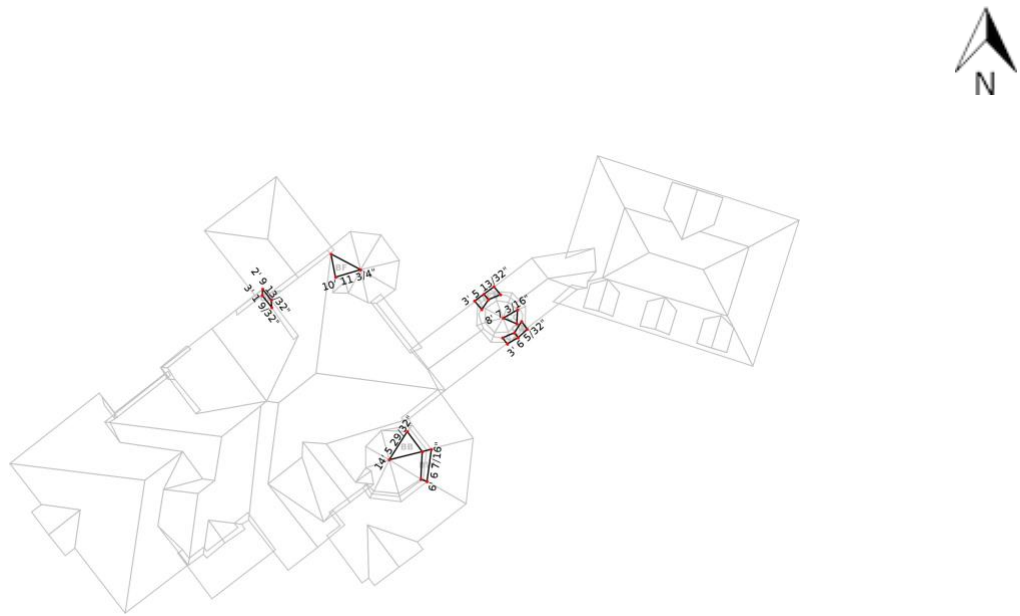


Figure 9: Edge Measurements



### Edge Measurements.

Surface(s): BC, BH, CD, CN

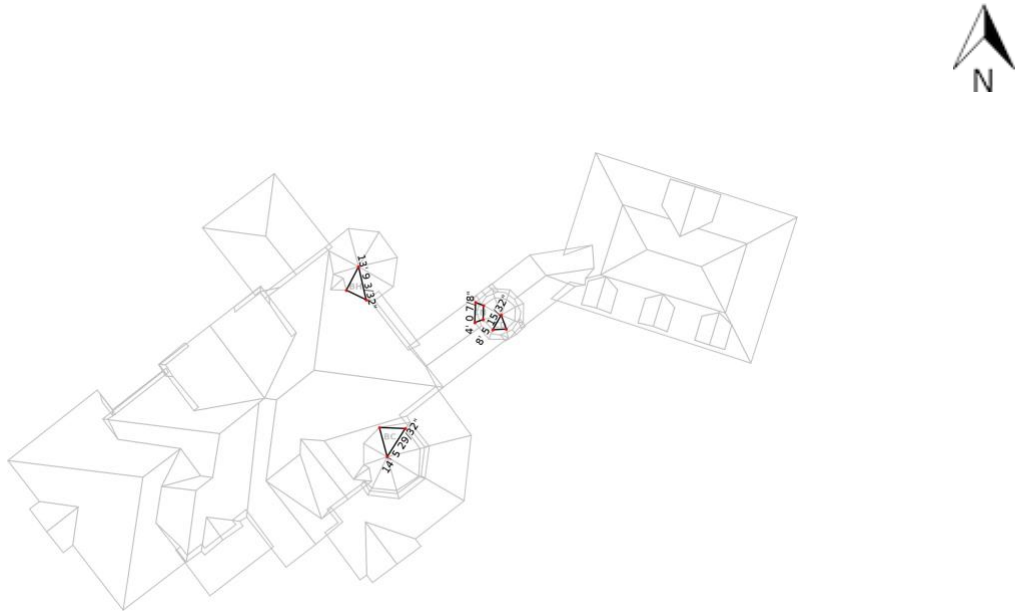


Figure 10: Edge Measurements



### Edge Measurements.

Surface(s): BE, BU, CG

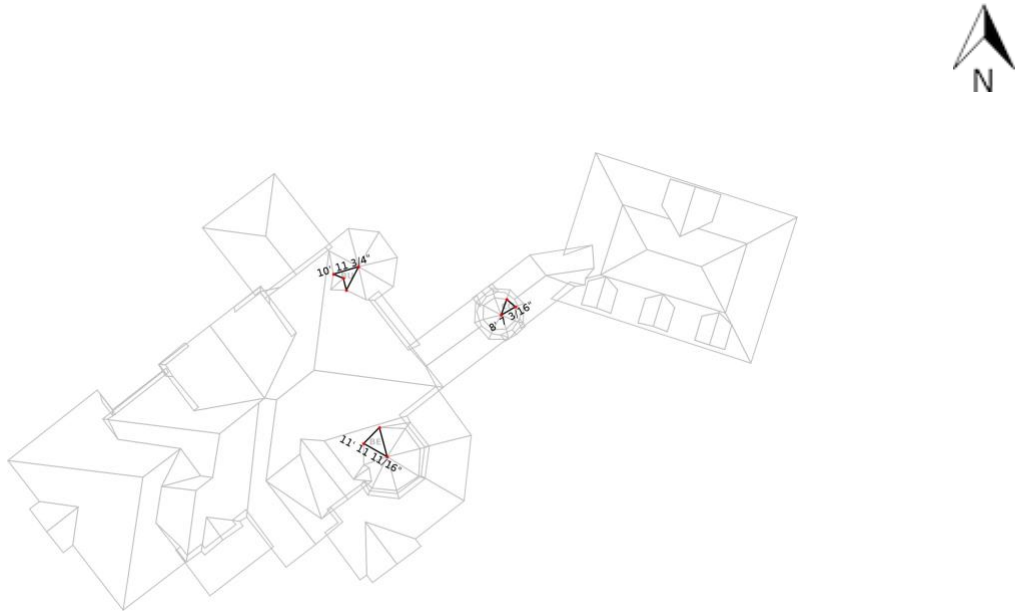


Figure 11: Edge Measurements



### Edge Measurements.

Surface(s): BQ, CR

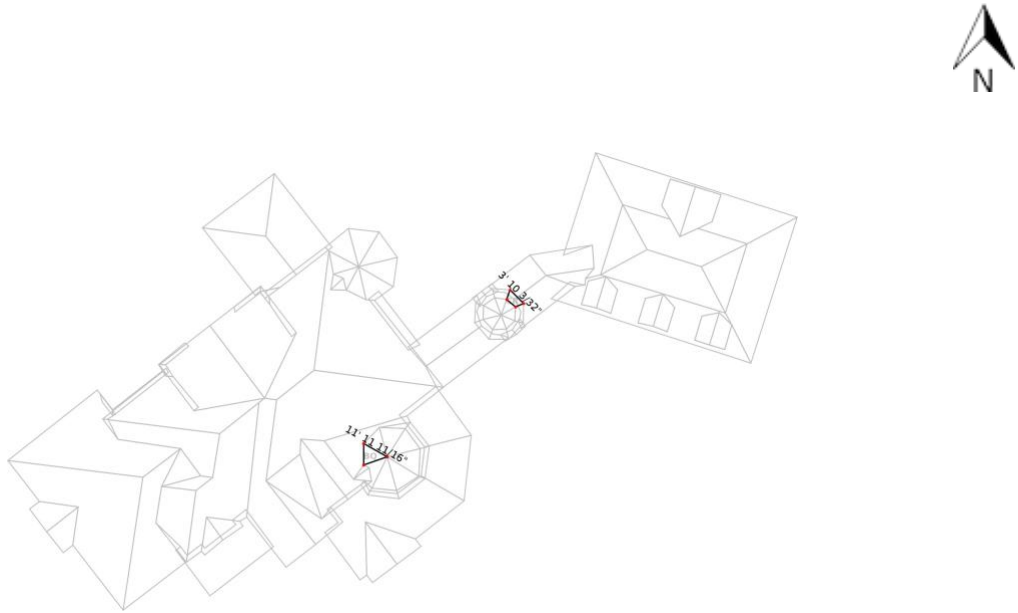


Figure 12: Edge Measurements





## Edges Types

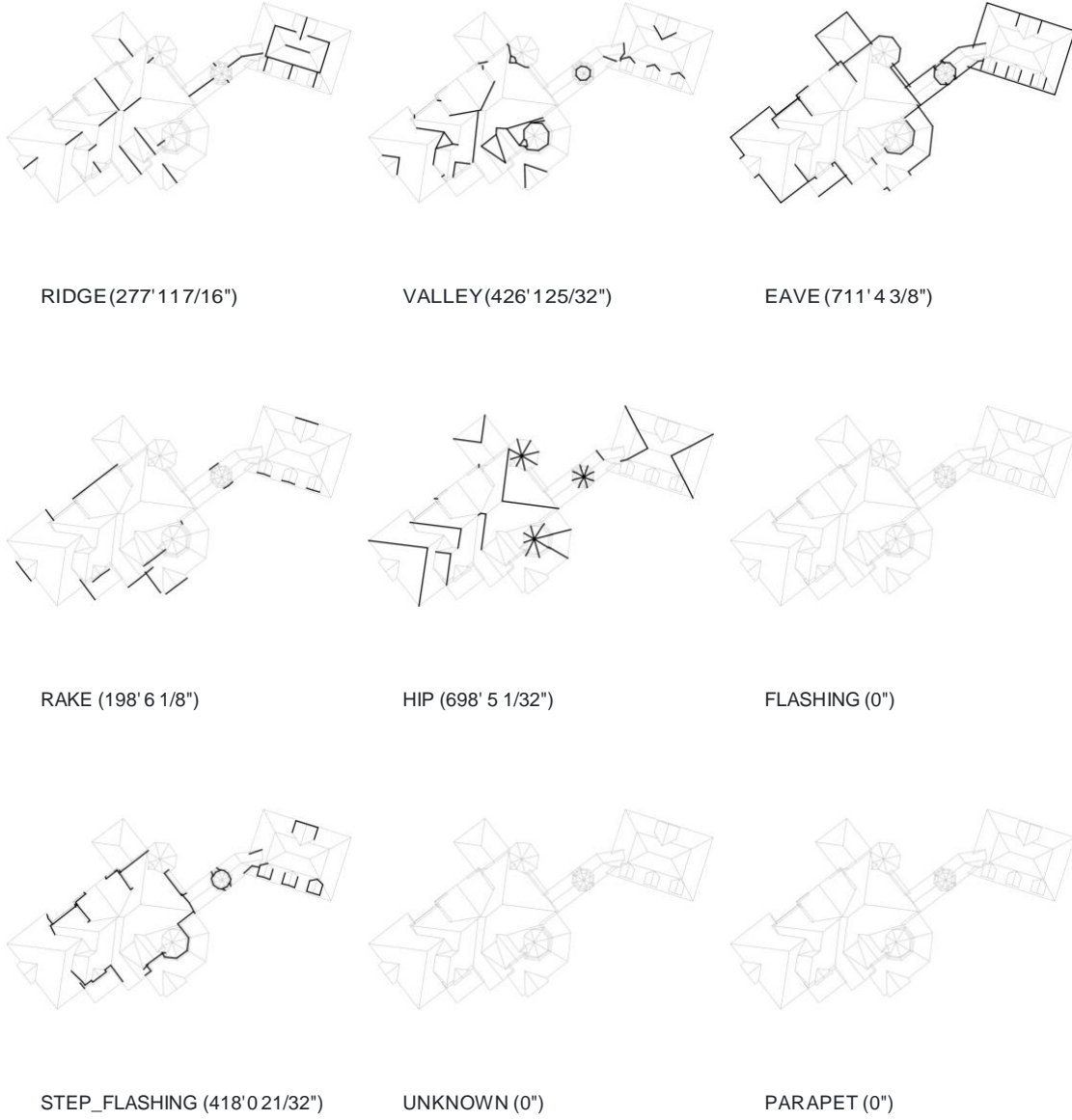


Figure 13: Roof Edge Classification (units: ffi)

## Edge Type Summary

Classification	Edge Count	Total Length
RIDGE	28	277' 117/16"
VALLEY	70	426' 125/32"
EAVE	77	711' 43/8"
RAKE	28	198' 61/8"
HIP	64	698' 51/32"
FLASHING	0	0"
STEP_FLASHING	85	418' 021/32"
UNKNOWN	0	0"
PARAPET	0	0"
<b>Total</b>	<b>352</b>	<b>0</b>

Table 2: Edge Type Summary (units: ffi)

